



Sicher elevator portal



Sicher elevator wechat

LEAD THE DEVELOPMENT OF FUTURE
TRANSPORT BY INNOVATIVE TECHNOLOGY

Sicher Elevator Co.,Ltd.

Add: NO.1 Sicer Road, Lianshi Industrial Park, Huzhou City, Zhejiang, China

Tel: +86-572-3787198 400-887-5898 P.C: 313013

Fax: +86-572-3787199 [Http://www.sicher-elevator.com](http://www.sicher-elevator.com)

E-mail: sicher@sicher-elevator.com(domestic) srh@sicher-elevator.com(International)

Printed in March 2023

SRH

SAFE REACH

STOCK
CODE | 301056

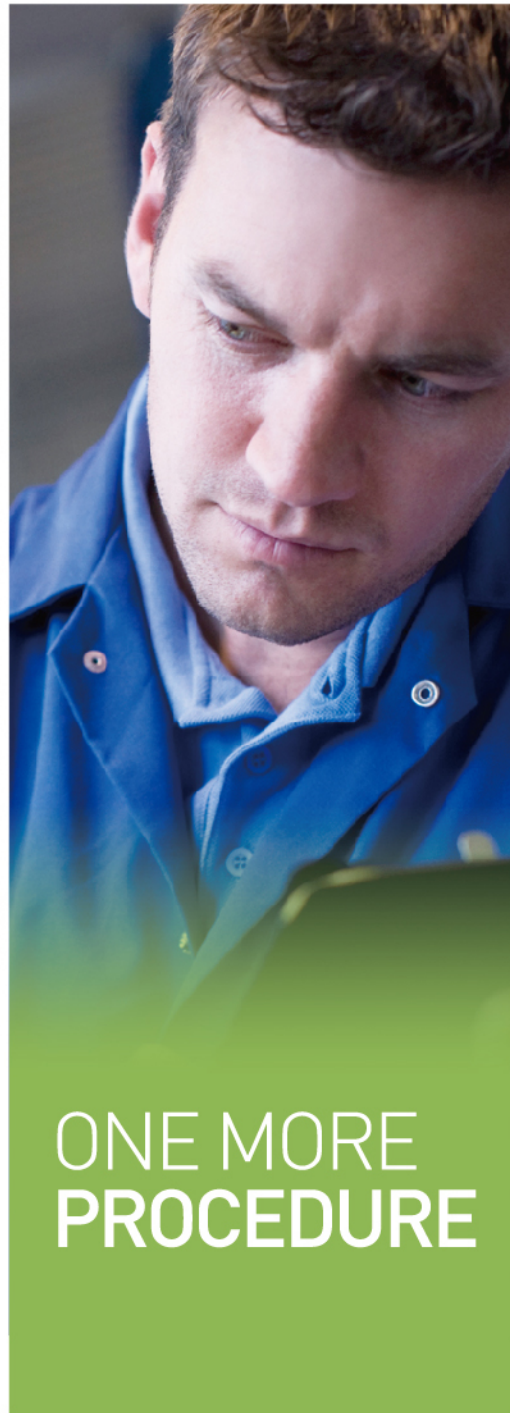


GRV20

Home Elevator

Preference for smart home

SRH
SAFE REACH



**SICHER ELEVATOR,
ALL FOR SAFE REACH**



Scan QR Code to follow more information about Sicheer Elevator



Sicheer Elevator Co., Ltd.

Sicheer Elevator Co., Ltd. is a comprehensive elevator manufacturing service provider engaging in the development, manufacturing, sales, installation, maintenance and modern renewal and transformation of elevators, and holds the national highest-level production license for producing special equipment (A1). After successfully listed on the growth enterprise market of Shenzhen Exchange Stock in September 2021 (Stock Name: Sicheer; Stock Code: 301056), Sicheer Elevator has become the first elevator company listed on the growth enterprise market in Zhejiang and one of the top 10 Chinese elevator manufacturers.

For nearly 20 years, Sicheer Elevator has always taken "all for safe reach" as the core philosophy, concentrated on two superior fields of core technology and elevator safety and built the whole industrial chain service platform and intelligent industrial new eco-system of the elevator industry. Sicheer Elevator has established a long-term strategic partnership respectively with China State Construction Engineering Corporation, China Railway Engineering Corporation, China Communications Construction, China Metallurgical Group Corporation, Shimao Group and many other famous real estate enterprises. Sicheer Elevator has been one of the top 10 elevator suppliers of governments in China for eight consecutive years and become a supplier of central government organs in centralized procurement. Its products have been exported to over 80 countries and regions. SRH has become a well-received elevator brand in Russia, Australia, Turkey, Mexico, Brazil, New Zealand, UAE, India, Egypt, Iran, Bangladesh, South Africa and other countries and regions.

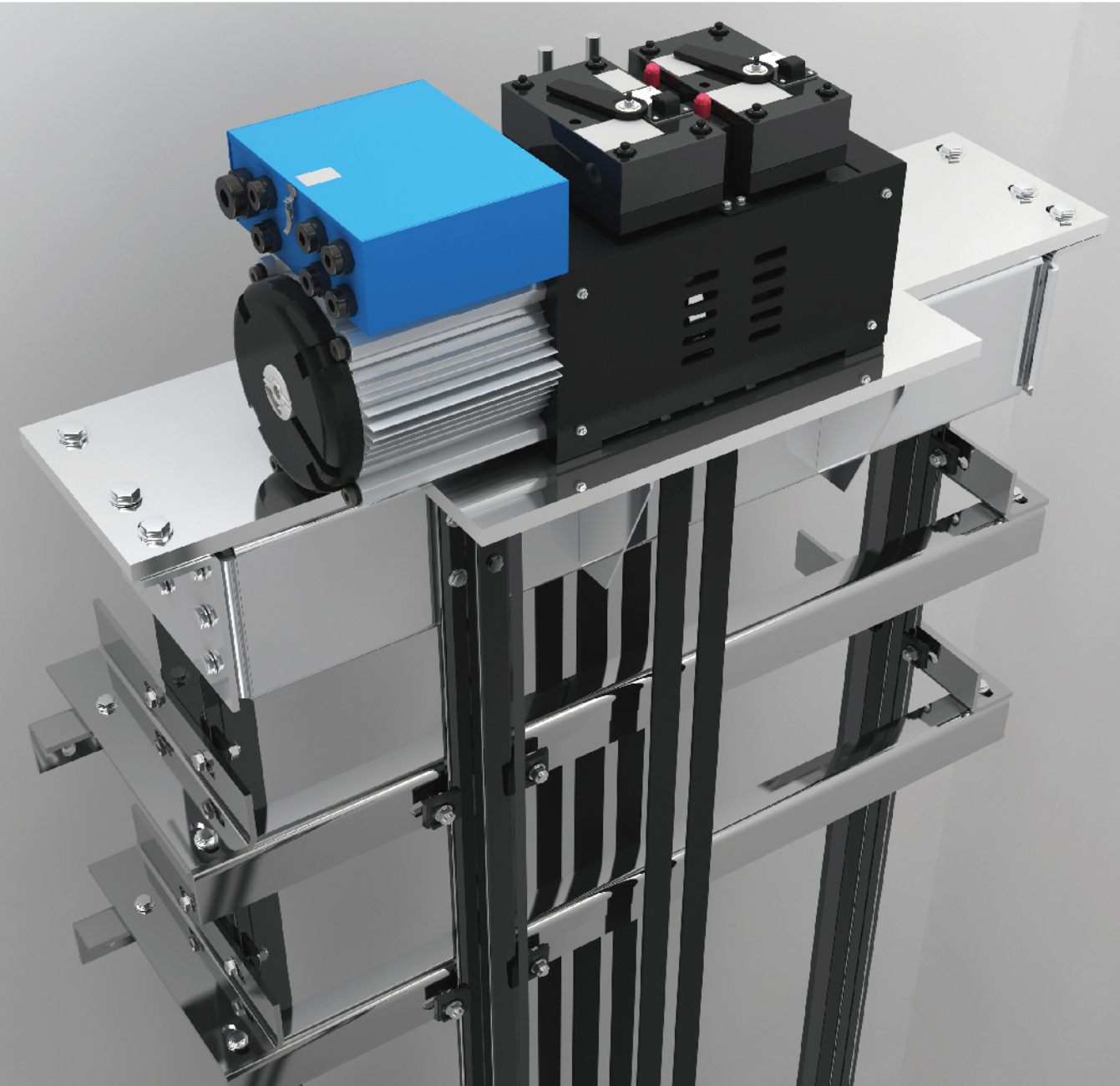
Science and Technology Leading Advance with Glory

- Top 10 Chinese elevator manufacturers for three consecutive years
- Products are exported to over 80 countries and regions
- Selected as one of the top 10 elevator suppliers in national government purchase for eight consecutive years
- The core technology won the Science and Technology Advancement Award of Zhejiang Province
- Presided over and participated in the drafting of over 40 national and industrial elevator standards
- Won the Engineering Award of Elevator World; included on the list of Shanghai China Records
- Developed worldwide and purchased a modern German elevator manufacturing factory
- A five-star enterprise undertaking social responsibility in China

Different driving modes Improve your quality of life

Classical traction type

The structure is optimized with unbiased loading design, and runs smoothly and comfortably. The site is mainly connected by bolts, which is convenient for installation and maintenance.



Steel belt traction type

The overall structure is optimized with lower requirements on the depth of the pit and the top height, and the layout is flexible. Higher space utilization rate can achieve larger car space in the same hoistway. It adopts polyurethane flat composite steel belt, soft and wear-resistant, comfortable and silent in operation.

Car Decoration



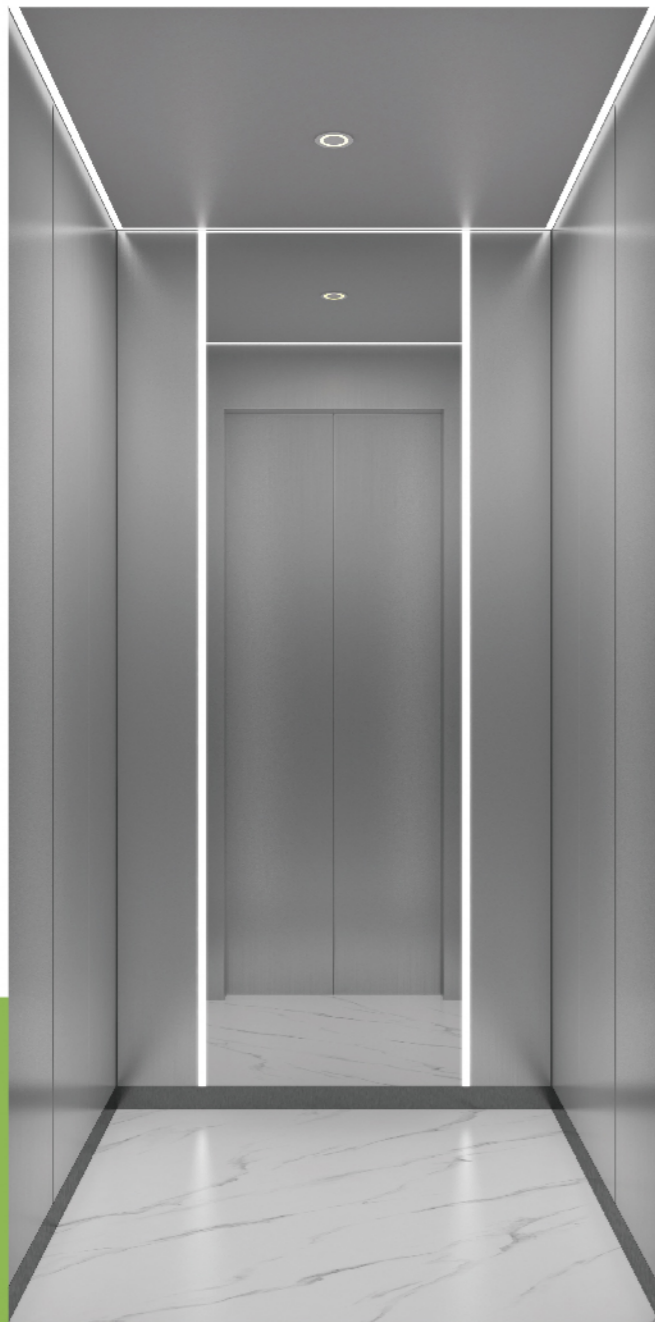
RHX16 Standard

Ceiling	Hairline stainless steel + downlight
Rear wall	Hairline stainless steel + decorative bar
Side wall	Hairline stainless steel
Front wall	Hairline stainless steel
Car door	Hairline stainless steel
Floor	PVC
COP	Anti-fingerprint panel

Two-dimensional
code panoramic car



Car Decoration



RHX18-1 Optional

Ceiling	Aluminum profile frame + LED lamp
Rear wall	Mirror stainless steel + stainless steel with hairline on both sides + inlaid LED light
Side wall	Hairline stainless steel
Front wall	Hairline stainless steel
Car door	Hairline stainless steel
Floor	PVC
COP	Wall mounted

Two-dimensional
code panoramic car



Car Decoration



RHX10 Optional

Ceiling	Mirror stainless steel + LED light (RHT08)
Rear wall	Safety laminated glass + hairline stainless steel
Side wall	Safety laminated glass + hairline stainless steel
Front wall	Hairline stainless steel
Floor	PVC (RHD23)
COP	Anti-fingerprint panel (RHK09)
Handrail	RF100

Two-dimensional code panoramic car



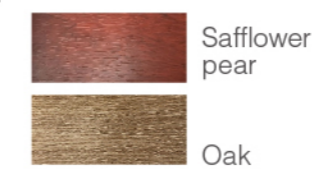
RHX24 Optional

Ceiling	Aluminum profile frame+ LED lamp
Rear wall	Mirror etching stainless steel + wood grain film on both sides
Side wall	Wood grain film(Walnut)
Front wall	Wood grain film(Walnut)
Car door	Wood grain film(Walnut)
Floor	PVC
COP	Wall mounted

Two-dimensional code panoramic car



Car wall optional



RHX25 Optional

Ceiling	Aluminum profile frame+ LED lamp
Rear wall	Cosmetic steel plate (Xishang Branch)+wood grain film on both sides+ decorative aluminum strip
Side wall	Wood grain film(Oak)
Front wall	Wood grain film(Oak)
Car door	Wood grain film(Oak)
Floor	PVC
COP	Wall mounted

Two-dimensional code panoramic car



Car wall optional



Car Decoration



RHX26 Optional

Ceiling	Rose gold hairline stainless steel + rose gold mirror stainless steel frame + LED lamp
Rear wall	Cosmetic steel plate + rose gold hairline stainless steel on both sides + LED lamp
Side wall	Rose gold mirror stainless steel + rose gold hairline stainless steel on both sides
Front wall	Rose gold mirror
Car door	Rose gold mirror
Floor	PVC
COP	Wall mounted

Two-dimensional
code panoramic car



RHX27 Optional

Ceiling	Aluminum profile frame + LED lamp
Rear wall	Champagne mirror stainless steel etching + hairline stainless steel on both sides
Side wall	Champagne gold mirror stainless steel + hairline stainless steel on both sides
Front wall	Hairline stainless steel
Car door	Hairline stainless steel
Floor	PVC
COP	Wall mounted



Two-dimensional
code panoramic car



RHX21 Optional

Ceiling	White wood finish + bronze mirror stainless steel + LED lamp
Rear wall	Bronze mirror stainless steel etching + wood veneers on both sides inlaid with bronze decorative strips + LED lights
Side wall	Wood veneer inlaid with bronze decorative strip + bronze hairline stainless steel on both sides
Front wall	Bronze hairline stainless steel
Car door	Bronze hairline stainless steel
Floor	PVC
COP	Wall mounted



Two-dimensional
code panoramic car

Human-machine interface



RHK09 Standard
Anti-fingerprint panel



RHL09 Standard
Anti-fingerprint panel



RHK10 Optional
Toughened glass panel,
touch button, LCD display



RHK12 Optional
Operation Panel
(Wall-mounted)
Display Screen:
high-definition
LED segment
Button: finger-
print-resistant flat
button

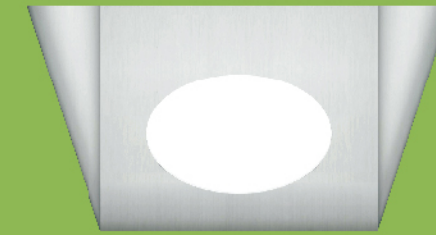


RHL12 Optional



RHL10 Optional
Toughened glass panel,
touch button (A bottom box)

Ceiling

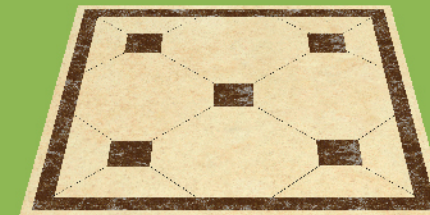


RHT08
Mirror stainless steel
+ LED light

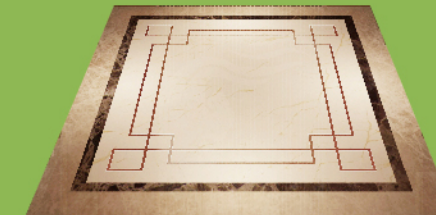


RHT09
Spray-paint steel plate
+ wood trim + lamp belt
+ LED down light

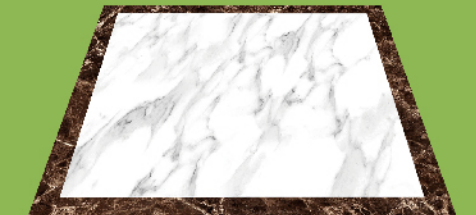
Floor



RHD05
PVC floor

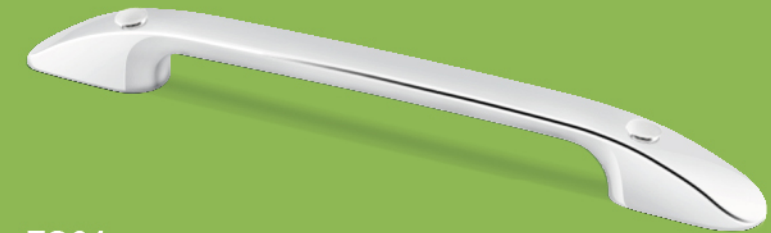


RHD15
PVC floor



RHD23
PVC floor

Handrail



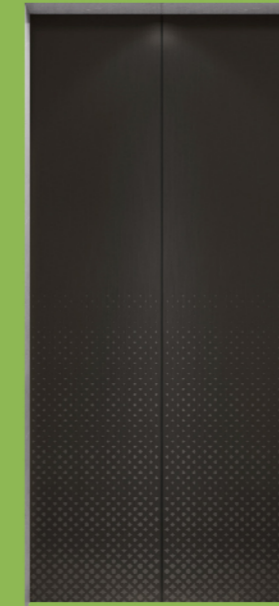
FS01
Optional
Copper alloy material



Landing door



RHM025
Hairline
stainless steel



RHM026
Hairline black
titanium etched
stainless steel



RHM027
Hairline light
champagne gold
etched stainless steel



RHM028
Hairline Ti-gold
etched stainless
steel



RHM029
Hairline rose gold
etched stainless steel



RHM030
Hairline light bronze
etched stainless steel



RHM031
Wood grain film
(Walnut)

Door
optional



Safflower
pear



Oak




Function

Standard function

	VVVF drive	Motor rotating speed can be precisely adjusted to get smooth speed curve in elevator's start, travel and stop and gain the sound comfort.
	VVVF door operator	Motor rotating speed can be precisely adjusted to get the more gentle and sensitive door machine start / stop.
	Photocell protection	In the door open and close period, infrared light that covers the whole door height is used to probe the door protection device of both the passengers and objects.
	Overload holding stop	When the car is overload, the buzzer rings and stops the elevator in the same floor.
	Emergency car lighting	Emergency car lighting automatically activated once power failure.
	Bell	In emergency conditions, if bell button above car operation panel is continuously pressed, electric bell rings on top of the car.
	Car ventilation, light automatic shut off	If there is no calling or command signal within the stipulated time, the car fan and lighting will be automatically closed in order to save the energy.
	Upward overspeed protection device	The device will slow down or stop the elevator automatically when the upward speed of the elevator exceeds 1.2 times of the rated speed.
	Downside overspeed protection device	When the elevator's descending speed exceeds 1.2 times of the rated speed, the device automatically cuts off the control power supply, making the motor stop running to prevent the descending speed; when the speed exceeds 1.4 times of the rated speed, the safety gear action will force the elevator stopping running to ensure its safety.

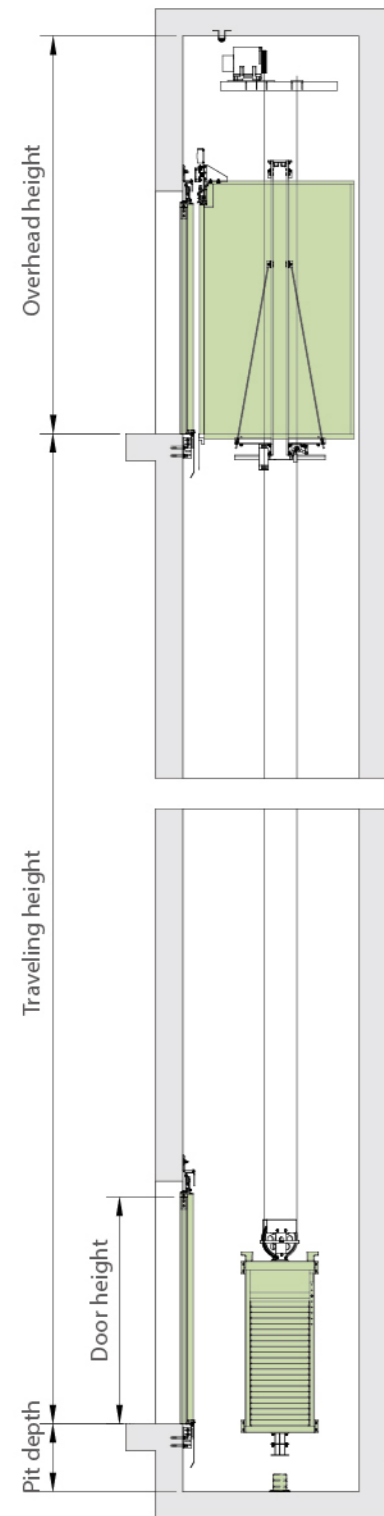


Optional function

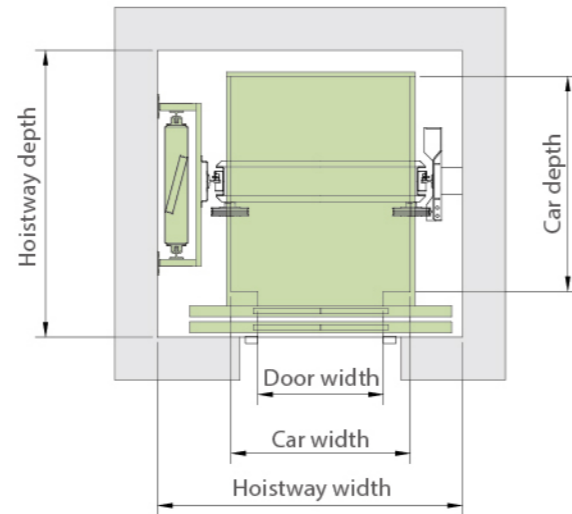
	One-key call	The elevator automatically calls the preset number through the emergency call system on the car for person-shutting, achieving the fastest and most efficient rescue as well as elevator overhaul.
	Car monitoring function	A camera device (camera) is added in the car to facilitate family members to monitor the situation inside the car.
	Emergency leveling device for power failure	When the running elevator suddenly loses power, passengers only need to wait a few seconds; the elevator will automatically enter the state of self-rescue leveling. It will run at a slow speed to the nearest leveling floor, then open the door automatically and let people go.

Construction sketch for classical traction type GRV20- II

Hoistway elevation



Hoistway plan

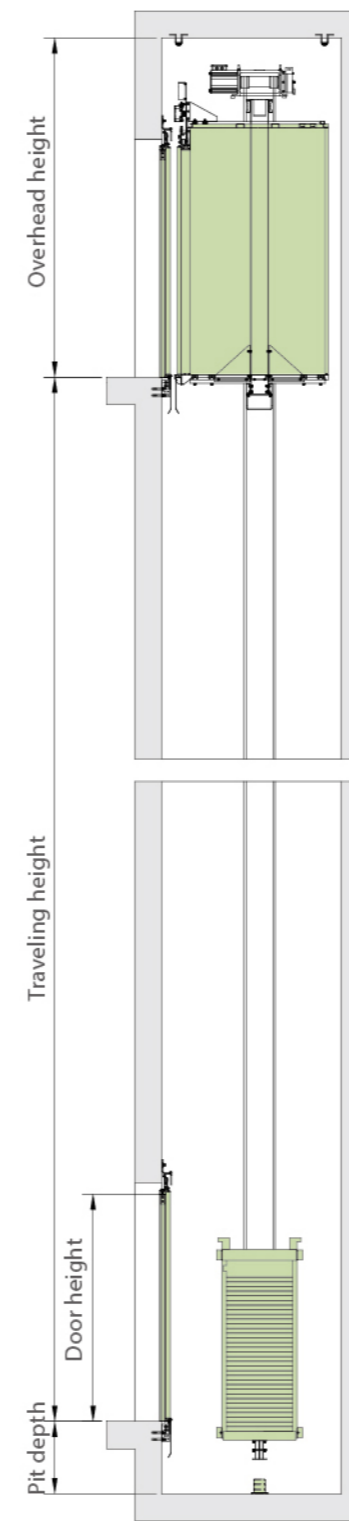


Classic traction parameter table			
Rated capacity (kg)	260	320	400
Persons	3	4	5
Car size (WxD)(mm)	800*1200	900*1200	1000*1200
Car height(mm)	2200		
Hoistway size H.WxH.D(mm)	1500*1600	1600*1600	1700*1600
Overhead(mm)		3000	
Pit depth (mm)	400		
Door opening size (mm)	700*2000	750*2000	800*2000
Door opening mode (mm)	Auto center opening door (Auto side opening door is alternative.)		
Rated speed(m/s)	0.4		
Traveling height(m)	≤12		
Power	Single-phase 220V/ three-phase 380V		

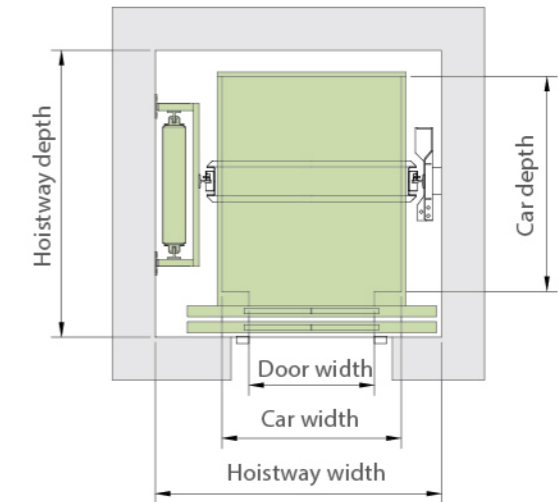
Remark: Details should be based on the drawings confirmed by both parties.

Construction sketch for steel belt traction type GRV20- V

Hoistway elevation



Hoistway plan



Steel belt traction parameter table			
Rated capacity (kg)	260	320	400
Persons	3	4	5
Car size (WxD)(mm)	850*1200	950*1200	1050*1200
Car height(mm)	2200		
Hoistway size H.WxH.D(mm)	1500*1600	1600*1600	1700*1600
Overhead(mm)		2900	
Pit depth (mm)	300		
Door opening size (mm)	700*2000	750*2000	800*2000
Door opening mode (mm)	Auto center opening door (Auto side opening door is alternative.)		
Rated speed(m/s)	0.4		
Traveling height(m)	≤12		
Power	Single-phase 220V/ three-phase 380V		

Remark: Details should be based on the drawings confirmed by both parties.